

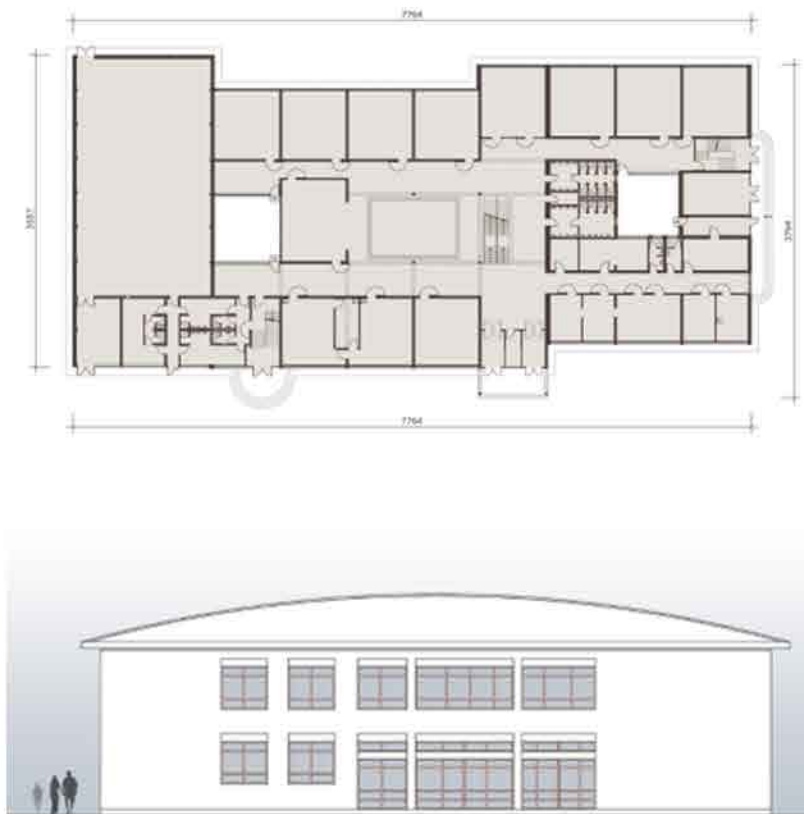
Position in the city of Sarajevo

#### Basic information about the object

Sjeverna zemljopisna dužina	43°49'40.11"
Istočna zemljopisna dužina	18°20'47.39"
Nadmorska visina	51.6 m
Arhitekt - rekonstrukcija	Vuković Nada
Godina izgradnje	1970/1997. godina
Katnost	Pr + 1
Prosječan broj učenika i osoblja (10god.)	920

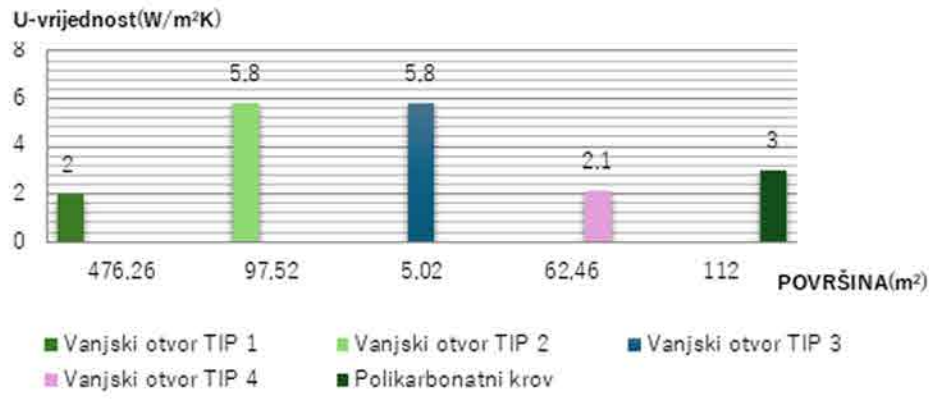
The building was constructed in 1970 and belongs to the historical period of construction after World War II, specifically from 1970 to the present. During the last war (1992 - 1995), it was completely destroyed, so in 1997 it was redesigned and rebuilt on the original site.

Draft of the current situation

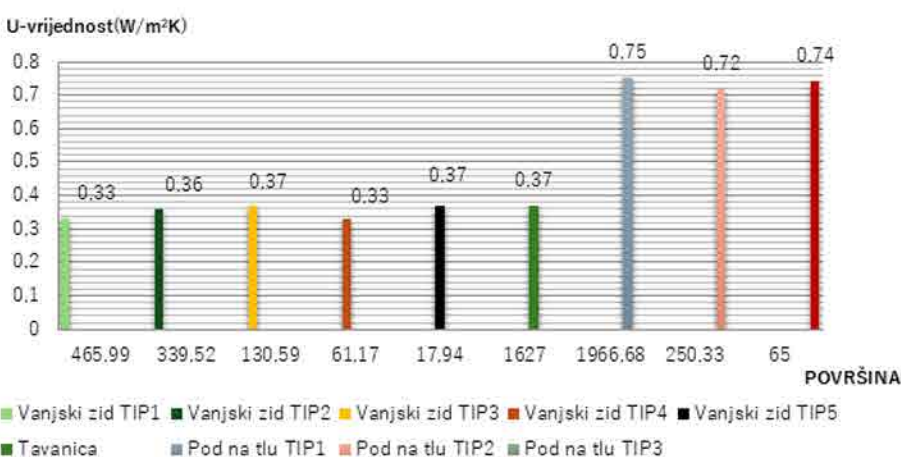


#### Analyze the envelope and energy consumption

##### U value of the transparent parts of the envelope



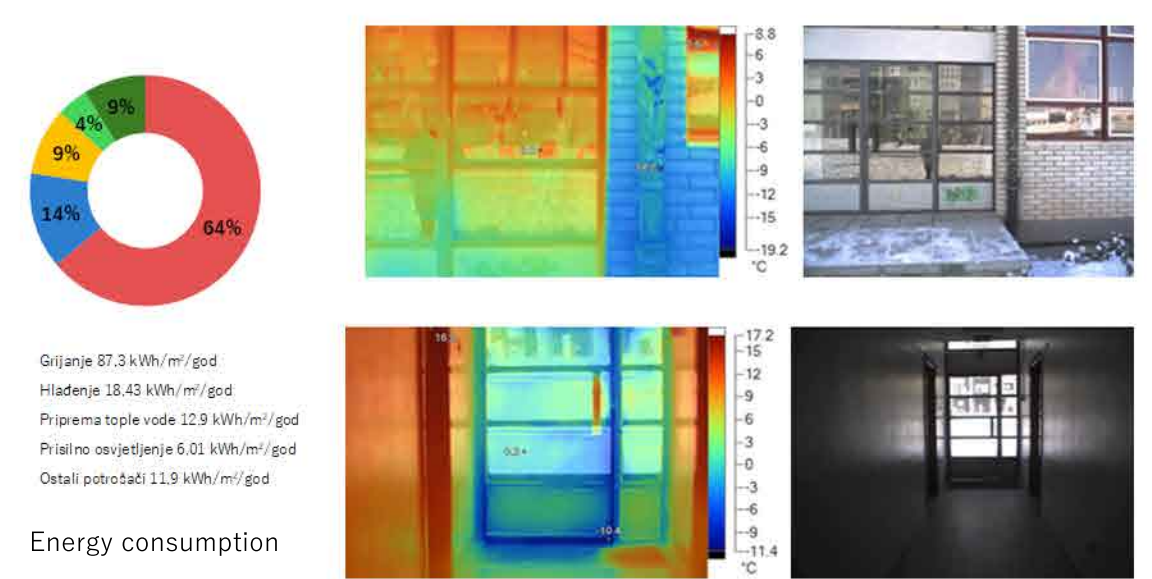
##### U-values of solid envelope surfaces



##### Relationships between solid and transparent surfaces in the envelope



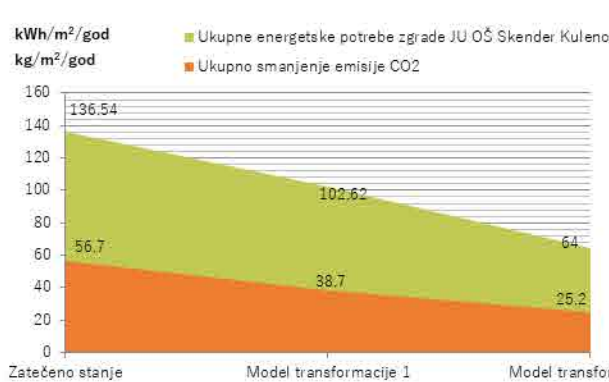
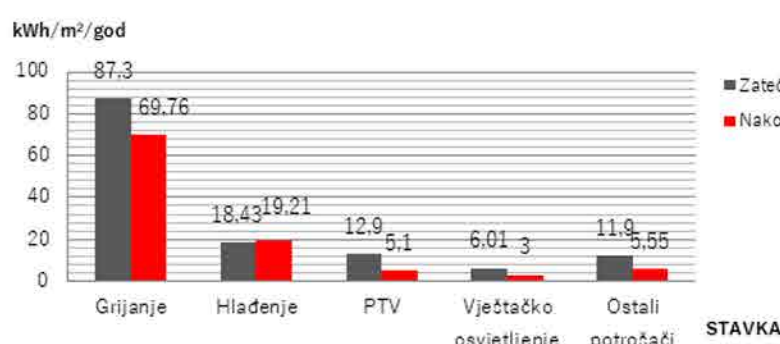
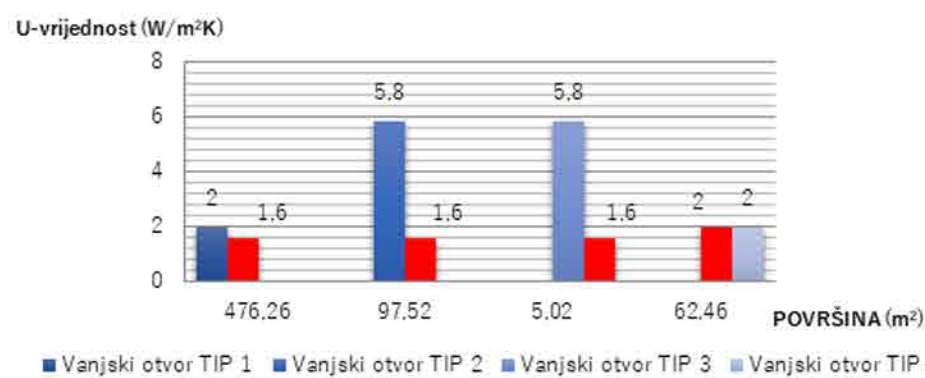
##### Thermal imaging analysis of the envelope



##### Energy consumption



#### Transformation of space usage, energy refurbishment of the envelope and the concept of using renewable energy sources



##### Building redesign - new architectural identity

